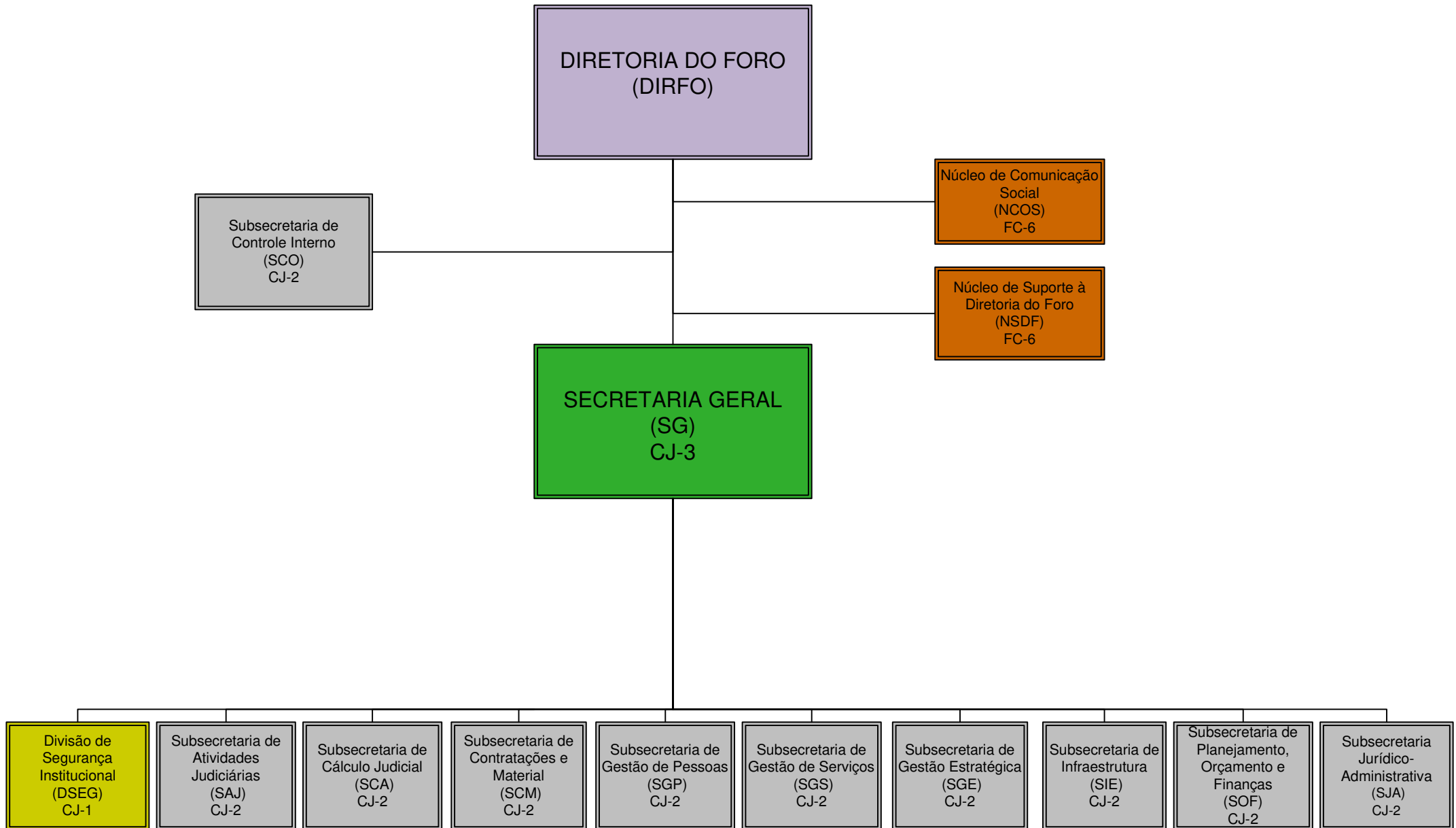
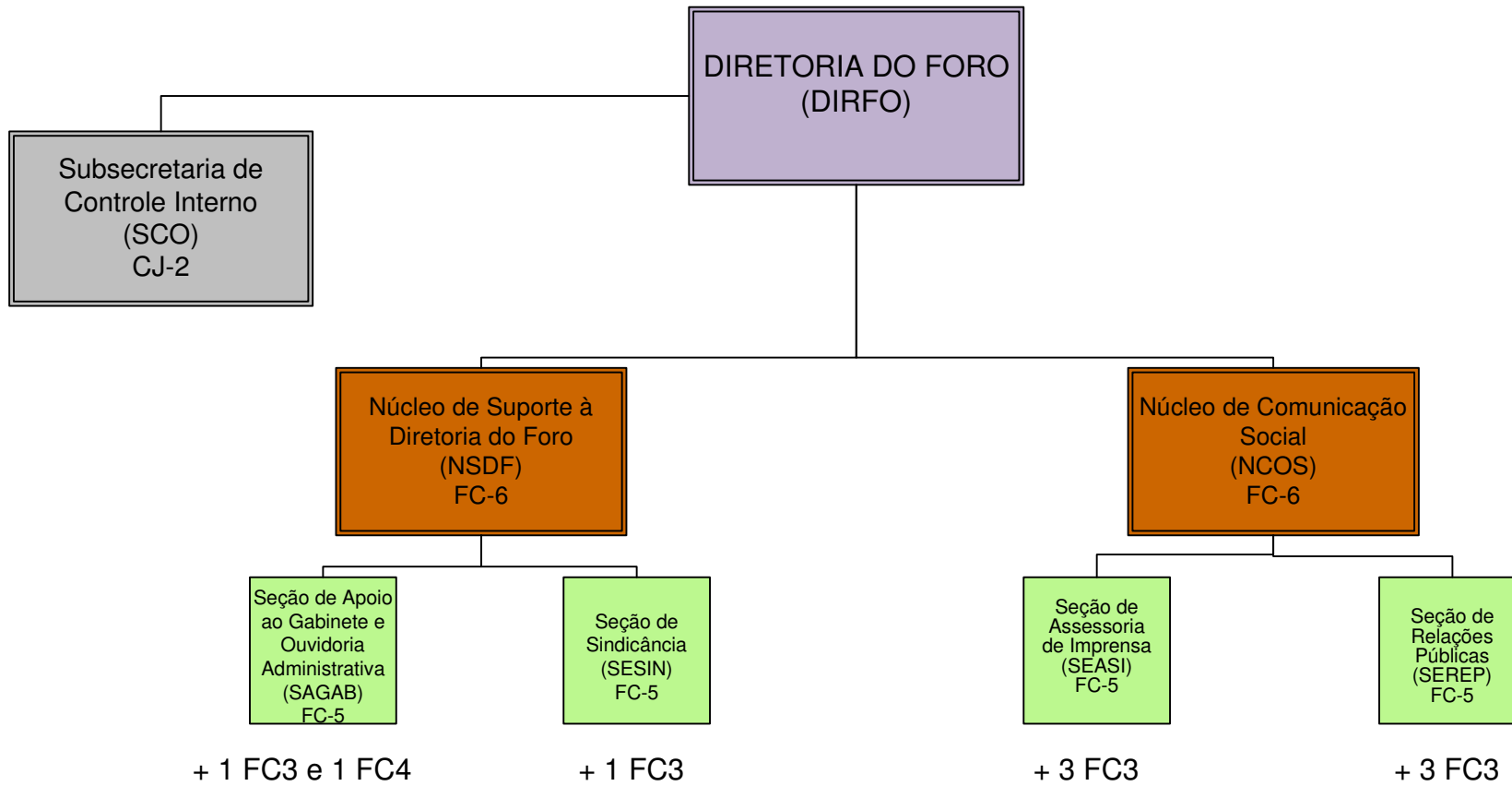


ADMINISTRAÇÃO DA SEÇÃO JUDICIÁRIA DO RIO DE JANEIRO

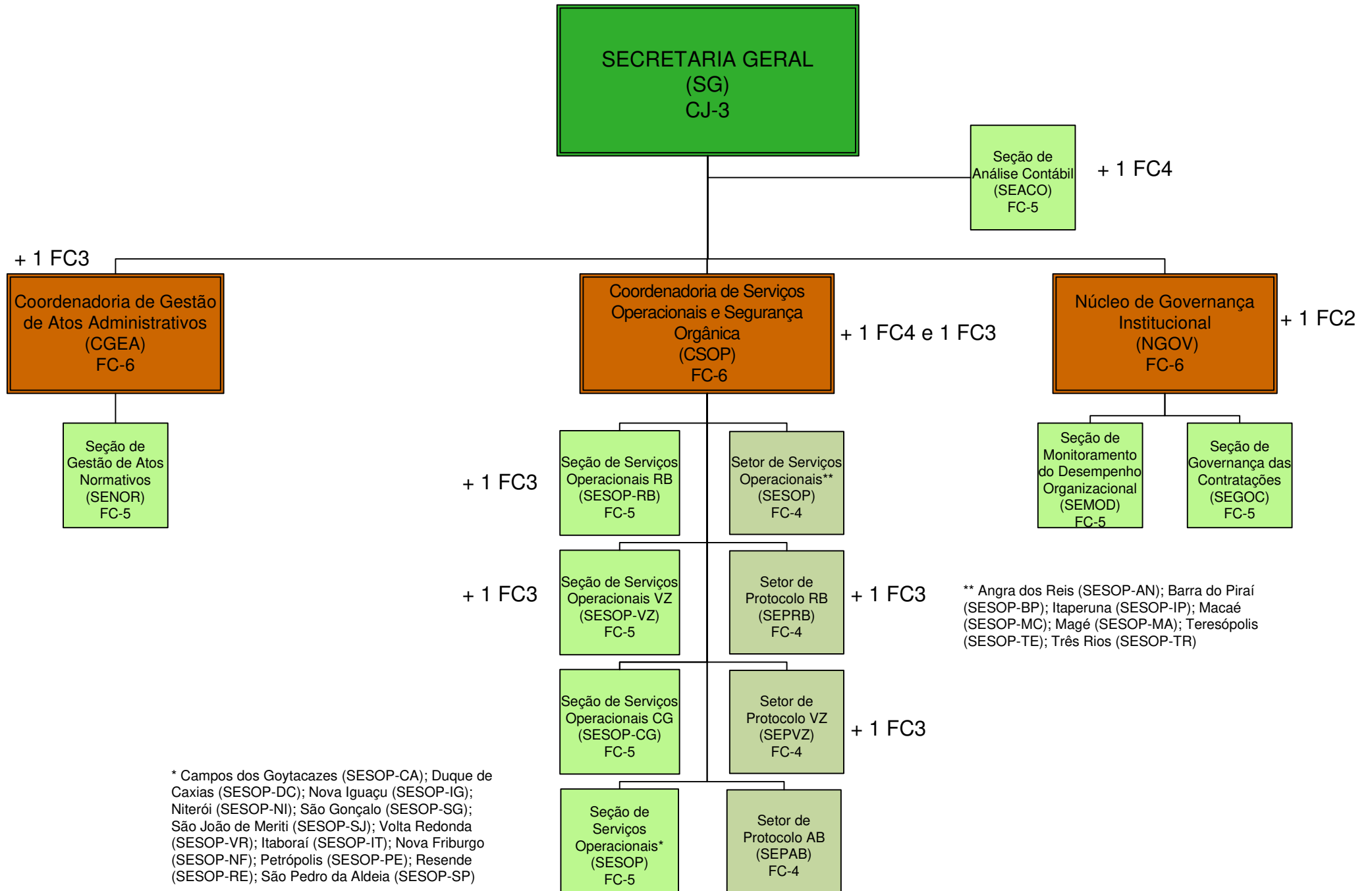
Data de vigência: 14/12/2018 Ato: TRF2-RSP-2018/00054



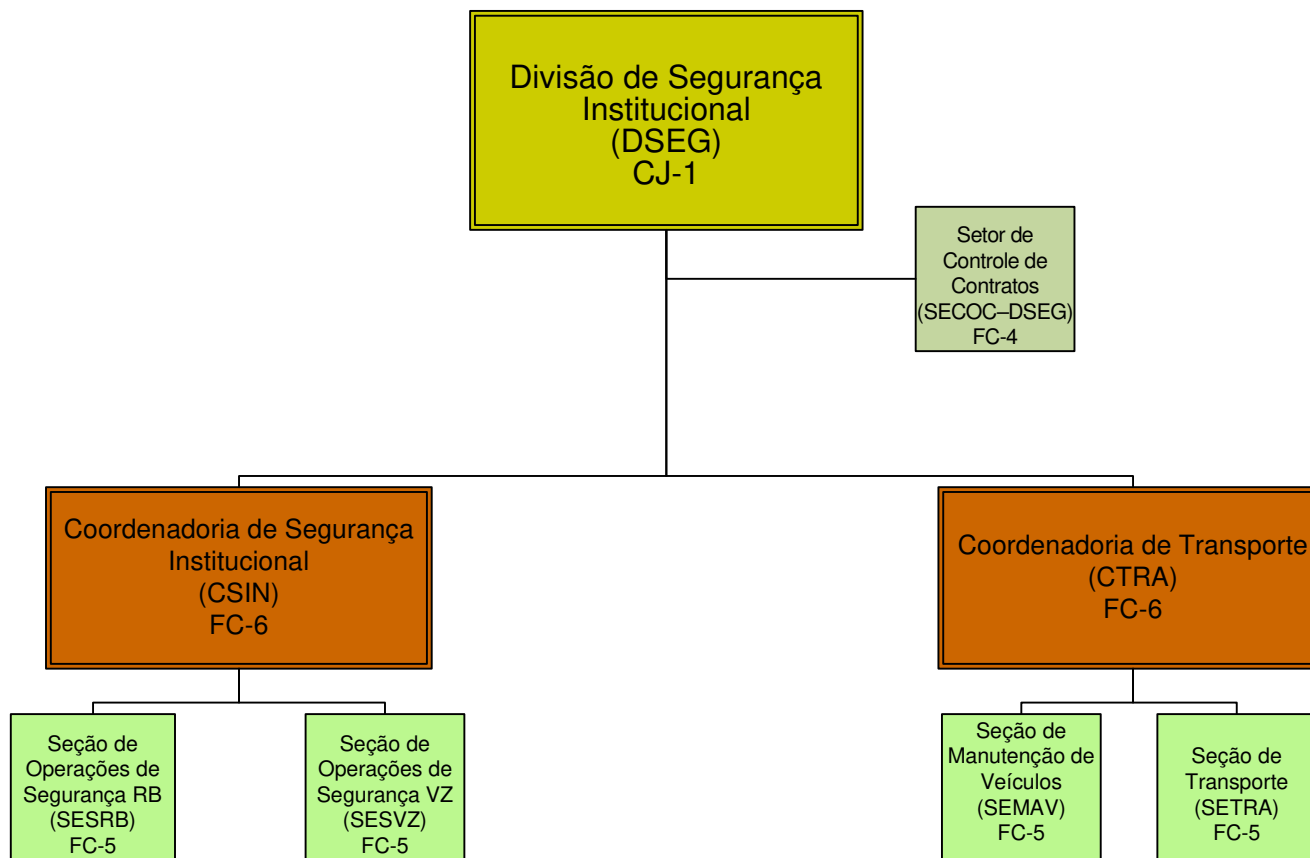
DIRETORIA DO FORO



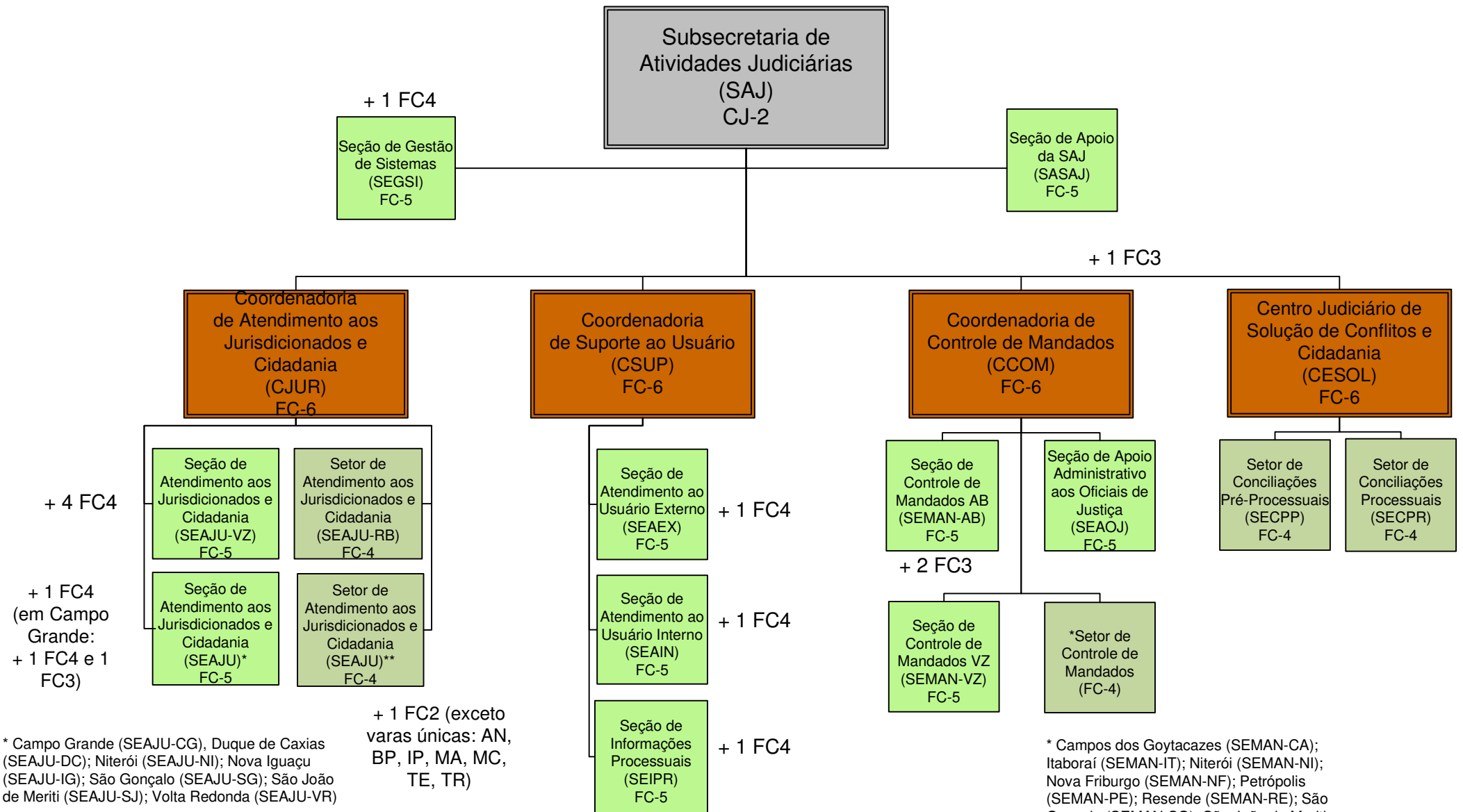
SECRETARIA GERAL



DIVISÃO DE SEGURANÇA INSTITUCIONAL



SUBSECRETARIA DE ATIVIDADES JUDICIÁRIAS



* Campo Grande (SEAJU-CG), Duque de Caxias (SEAJU-DC); Niterói (SEAJU-NI); Nova Iguaçu (SEAJU-IG); São Gonçalo (SEAJU-SG); São João de Meriti (SEAJU-SJ); Volta Redonda (SEAJU-VR)

** Angra dos Reis (SEAJU-AN), Barra do Piraí (SEAJU-BP), Campos dos Goytacazes (SEAJU-CA), Itaboraí (SEAJU-IT), Itaperuna (SEAJU-IP), Magé (SEAJU-MA), Macaé (SEAJU-MC), Nova Friburgo (SEAJU-NF), Petrópolis (SEAJU-PE), Resende (SEAJU-RE), São Pedro da Aldeia (SEAJU-SP), Teresópolis (SEAJU-TE), Três Rios (SEAJU-TR)

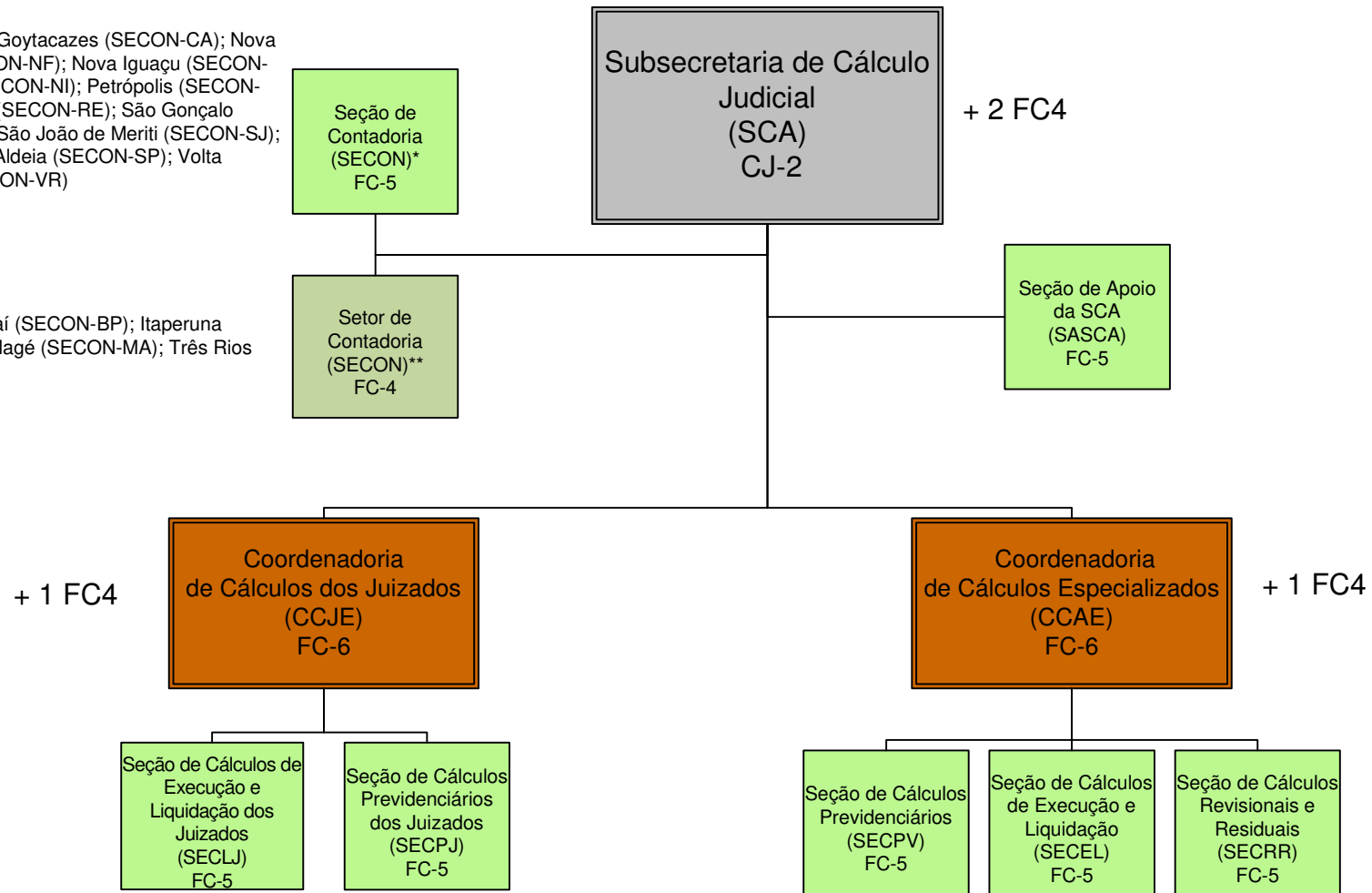
+ 1 FC2 (exceto varas únicas: AN, BP, IP, MA, MC, TE, TR)

* Campos dos Goytacazes (SEMAN-CA); Itaboraí (SEMAN-IT); Niterói (SEMAN-NI); Nova Friburgo (SEMAN-NF); Petrópolis (SEMAN-PE); Resende (SEMAN-RE); São Gonçalo (SEMAN-SG); São João de Meriti (SEMAN-SJ); São Pedro da Aldeia (SEMAN-SP); Volta Redonda (SEMAN-VR)

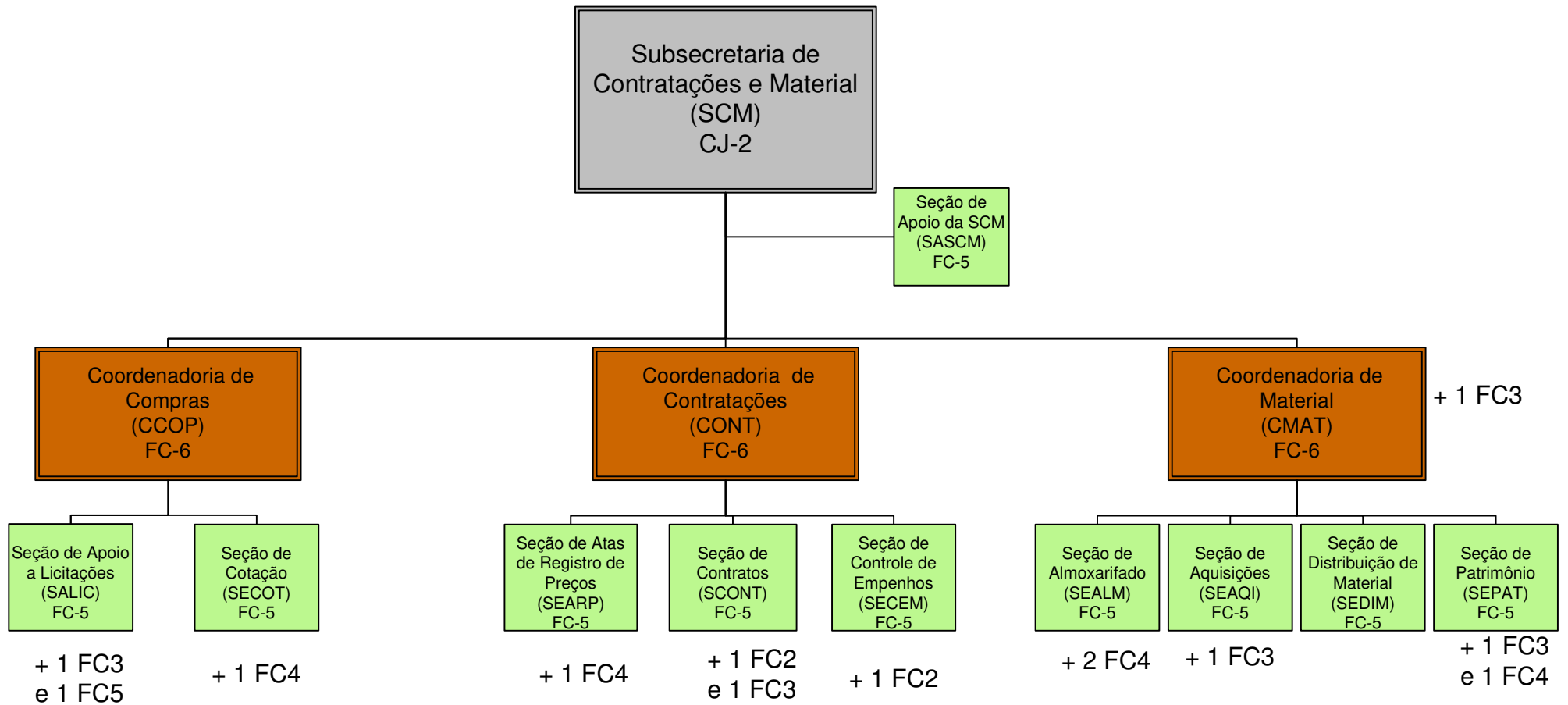
SUBSECRETARIA DE CÁLCULO JUDICIAL

* Campos dos Goytacazes (SECON-CA); Nova Friburgo (SECON-NF); Nova Iguaçu (SECON-IG); Niterói (SECON-NI); Petrópolis (SECON-PE); Resende (SECON-RE); São Gonçalo (SECON-SG); São João de Meriti (SECON-SJ); São Pedro da Aldeia (SECON-SP); Volta Redonda (SECON-VR)

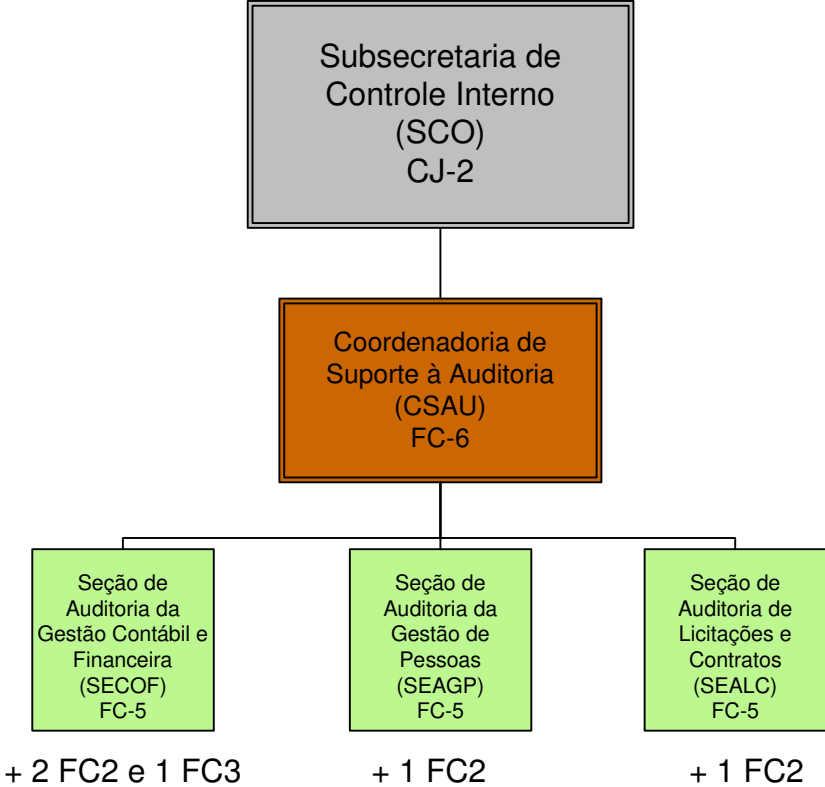
** Barra do Piraí (SECON-BP); Itaperuna (SECON-IP); Magé (SECON-MA); Três Rios (SECON-TR)



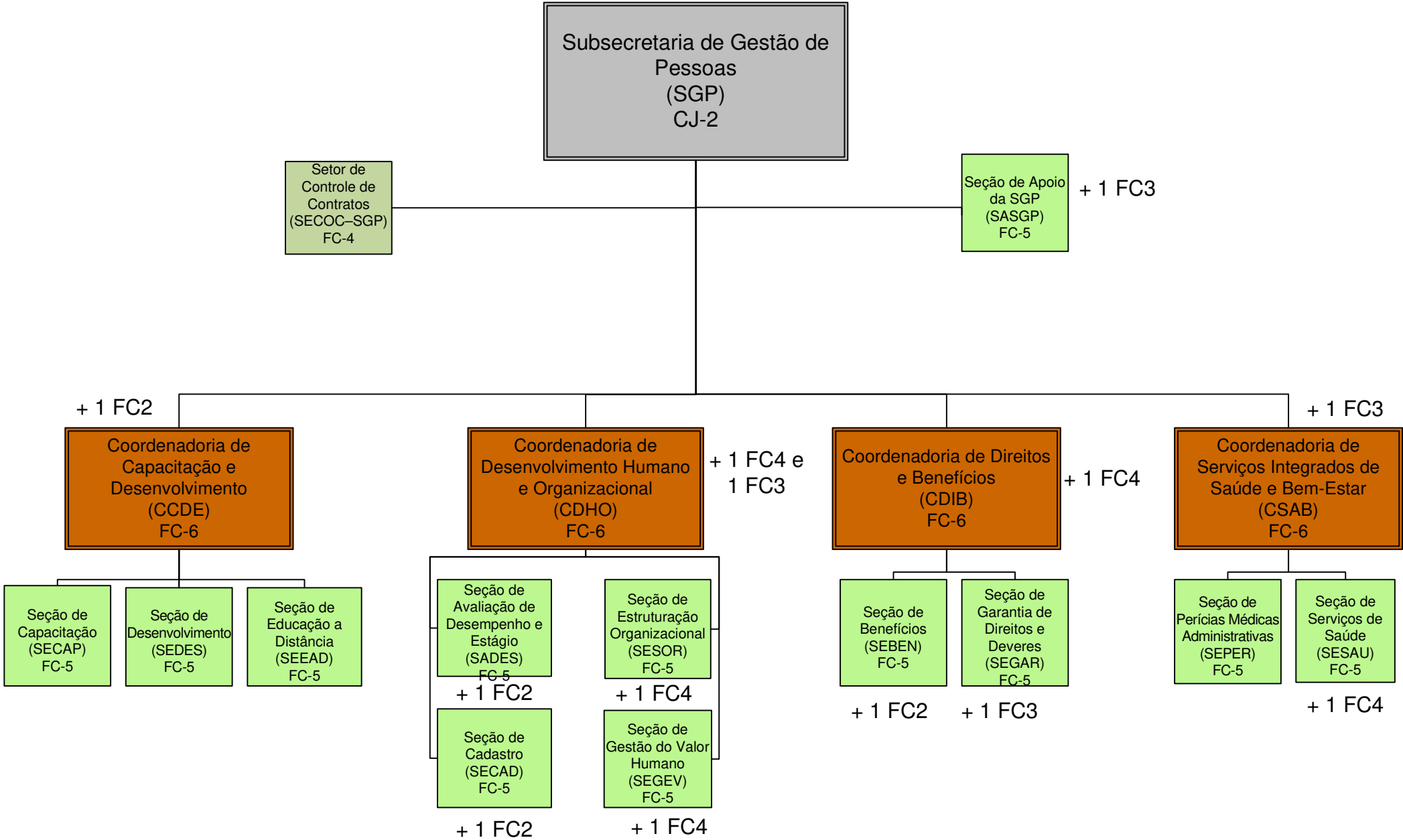
SUBSECRETARIA DE CONTRATAÇÕES E MATERIAL



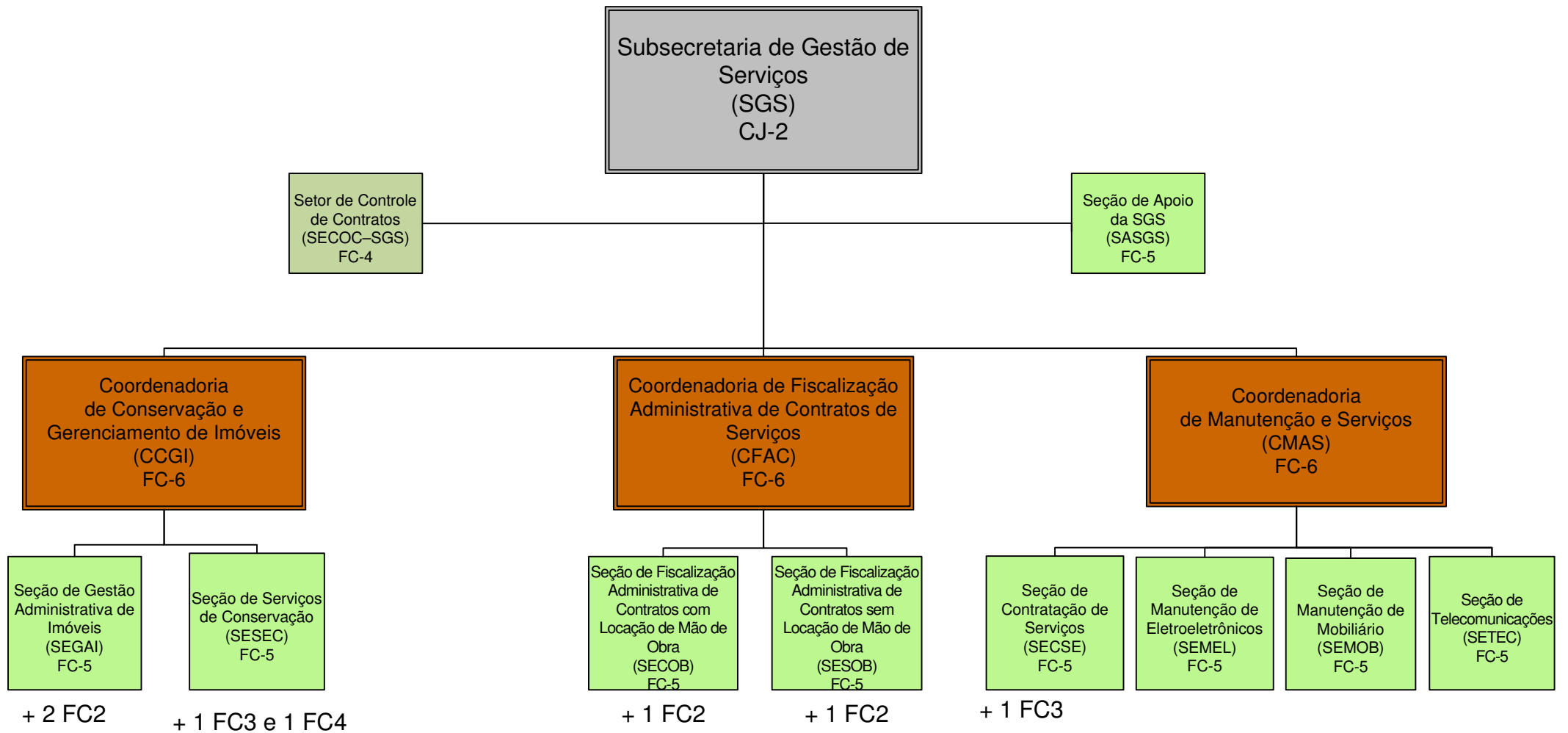
SUBSECRETARIA DE CONTROLE INTERNO



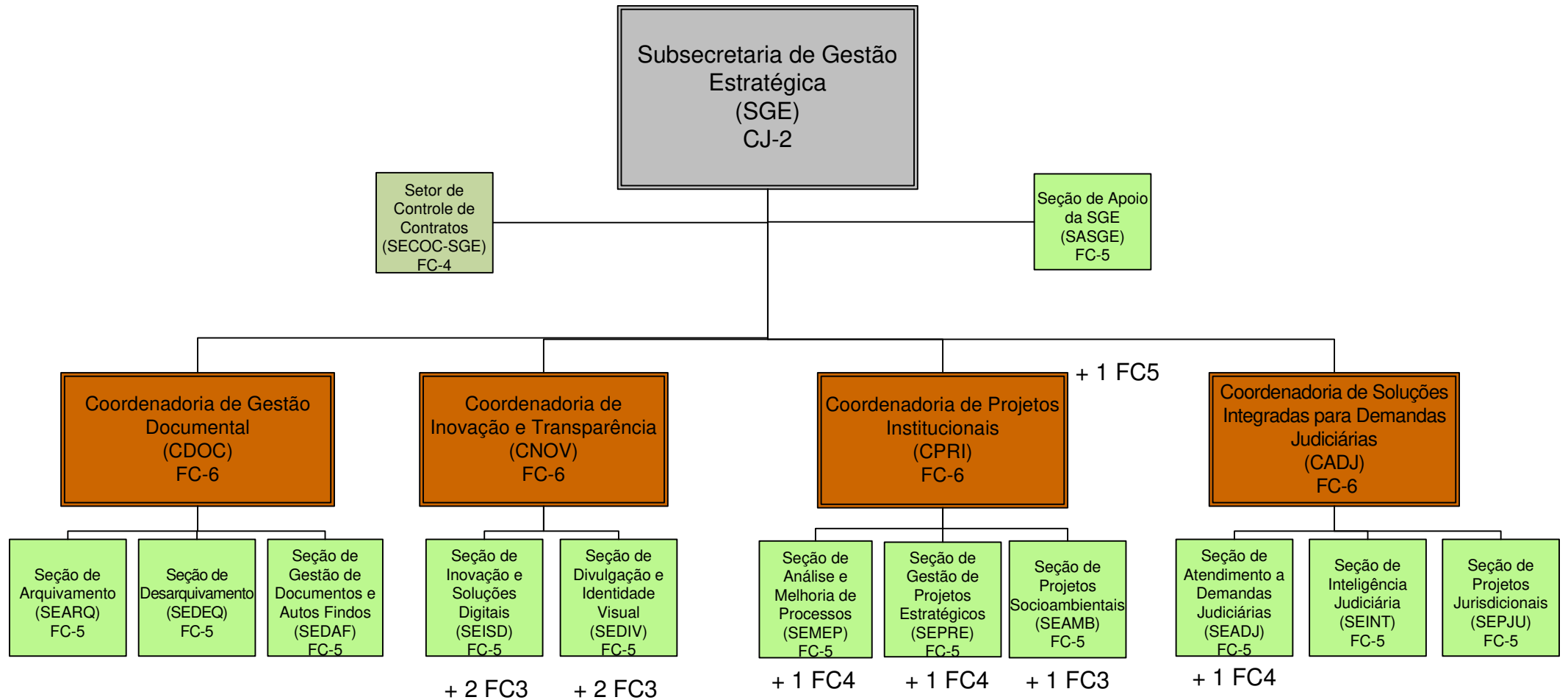
SUBSECRETARIA DE GESTÃO DE PESSOAS



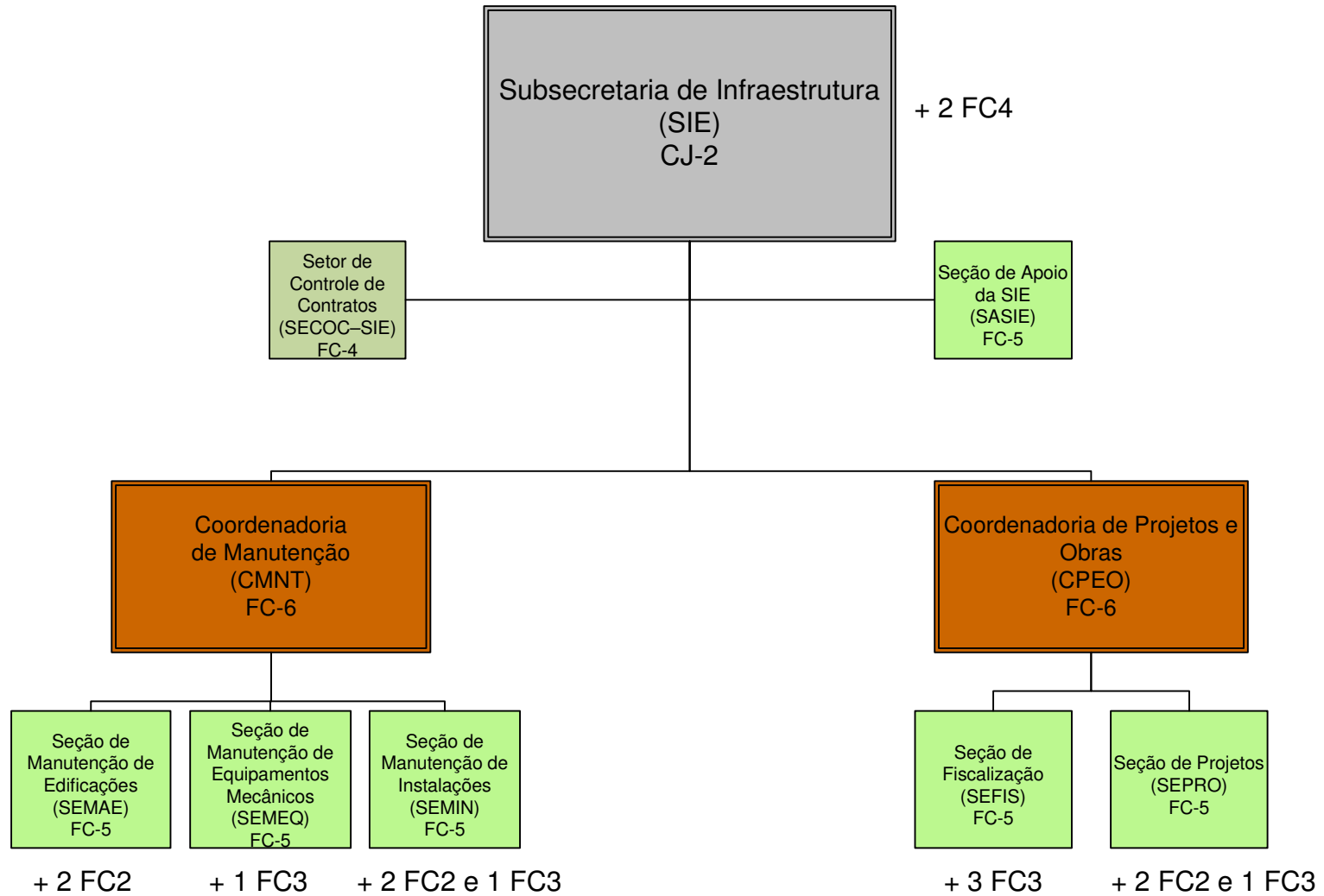
SUBSECRETARIA DE GESTÃO DE SERVIÇOS



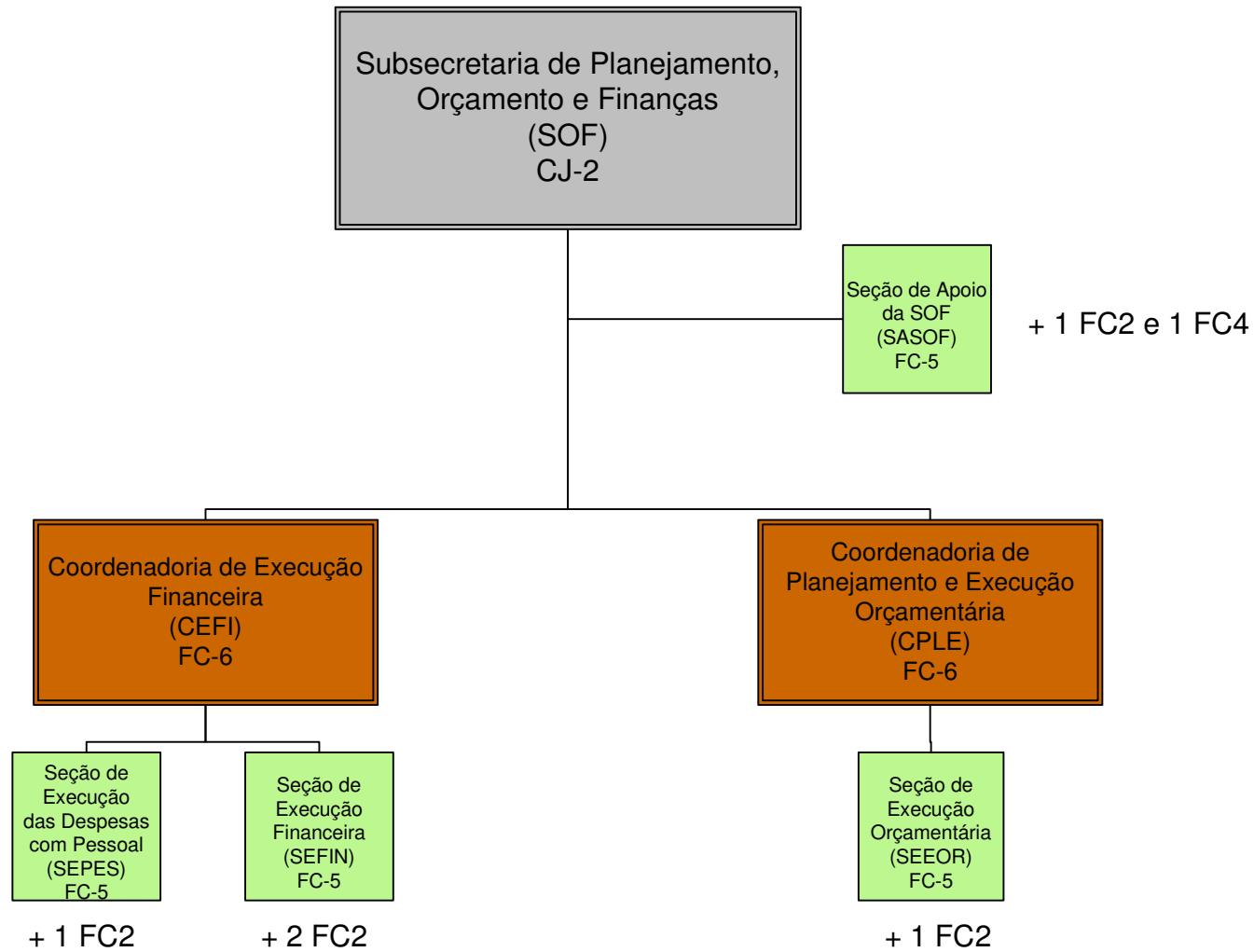
SUBSECRETARIA DE GESTÃO ESTRATÉGICA



SUBSECRETARIA DE INFRAESTRUTURA



SUBSECRETARIA DE PLANEJAMENTO, ORÇAMENTO E FINANÇAS



SUBSECRETARIA JURÍDICO-ADMINISTRATIVA

